

6
Lead Crew
1 ea. Bomb

C O N F I D E N T I A L

HEADQUARTERS
13TH COMBAT BOMB WING (H)
APO 559

nm

Date 20 March 1945
13 CBW FO 75
13 CBW OPS 300
3 AD FO 615

SUBJECT: Tactical Report (HAMBURG, GERMANY)

TO : Colonel Shuck - 95th

1. Information Concerning the Targets: a. The primary target (visual only) for 13A Group was the Submarine Slips in the Blohm and Voss K.G. Ship Building Yards 2 miles SW of the lake in the center of HAMBURG, GERMANY.

b. The secondary target (H2X) was an Industrial Plant in the same vicinity as the primary target.

2. Planning and Execution:

a. Order:	Bomb Load:	Force:	Assigned Target:
(1) 93 A:			
(a) 34	12 x 500 GP	24 A/C	Hamburg
385	12 x 500 GP	12 A/C	
(2) 45 A:			
(a) 388	12 x 500 GP	36 A/C	Hamburg
(3) 13 A:			
(a) 95	12 x 500 GP	36 A/C	Hamburg
(4) 4 A:			
(a) 447	12 x 500 GP	36 A/C	Hamburg

b. Availability:	Airborne:
(1) 95	Reg: 44 A/C 43 C/C 33 A/C Lead: 12 A/C 7 C/C 4 A/C
(a) A/C 8140:	412 Sqdn "C" - Pilot Lt. Ertel - Electrical fire - Insufficient time to get replacement A/C.
(2) 100	Reg: 40 A/C 52 C/C None Lead: 10 A/C 6 C/C
(3) 390	Reg: 31 A/C 62 C/C None Lead: 8 A/C 12 C/C

c. Non-effective Sorties and Returning Spares:

(1) 95:
A/C 7204: 335 Sqdn "B" - Pilot Lt. Legg - #2 engine feathered - No sortie.

d. Lead A/C Failures and/or Malfunctions:

(1) 95: A-deputy: H2X set out.

e. A/C Outstanding: None.

3. Navigation:

Position	Flight Plan Altitude	AL: N:	13A (95) Capt. Jeneman Lt. Ballatore
BU 11	16000°		16000° on time on course
CP 1	16000°		16000° 1 min. late on course
CP 2	22000°		22500° 6 min. late 5 mi. right
Continental Coast	25000°		25000° 4 min. late on course
IP	25000°		25000° 3 min. late 6 mi. left
Target	25000°		25000° (secondary)
RP	24000°		26000° 2 min. late 5 mi. right
Continental Coast	24000°		24800° 7 min. late 4 mi. right
CP 3	13000°		13000° 3 min. late on course
English Coast	2000°		7000° 10 min. early on course

a. Assembly: 13A assembled over Buncher 23 at 16000°. Because of insufficient time 13A was not completely assembled until CP 1. The normal interval in the Division Column was taken at Southwold.

b. Route: Enroute to CP 2 13A was 4 to 5 miles right of course and echeloned left of 45A Group. The route to the IP was flown essentially as briefed. Bombing altitude was reached 5 minutes prior to the IP. To attain proper spacing behind 45A, the IP was cut short, and individual H2X runs were made following the peel off at the IP. After bombs away it was necessary to climb 1000° enroute to the RP to clear a high cirrus layer of clouds. The briefed route was closely followed to the base. The English Coast was recrossed at Cromer.

c. Weather: 2-4/10 cumulus, base 2500°, tops 6000° were prevalent over the base area at take-off. This condition existed over the North Sea, becoming 5-7/10 below 10000° over the target area. A high cirrus layer at 25000° was encountered from the target to the RP, prevailing until just before the coast out.

d. Failures: (1) Equipment: None.

4. Bombing:

a.	Attacking:	Jettisoning:	Returning:
95	ST 36 A/C 416 x 500 GP	1 A/C 12 x 500 GP	

C O N F I D E N T I A L

b. 13A: (1) 95A Squadron: (8754)

(a) AL Capt. Jeneman N Lt. Ballatore
P Capt. Gillen B Lt. Lytle
R/N Lt. Painter

(b) After the maneuver at the IP, which was cut short, the R/N picked up the target in the scope at 45 miles and proceeded to kill course. The bombardier was clutched in at 11 miles and subsequent rate checks of 9, 7, and 5 miles were made. Bombs were released on a true heading of 116 degrees. C-1 Auto-Pilot was used on the bomb run. Because of existing weather conditions, visual assistance was not possible.

(c) Bombing Altitude: 24400° True, 25000° Indicated

(d) Time of Release: 1603

(e) Method of Release: Salvo

(f) PI Report: 1. The bombs from 95A fell 7200° short and left of the assigned secondary target in a residential and park area. Clouds obscured the middle portion of the pattern, which extended W to E from Adolphstrasse to Heiligengeist Feld - sports plaza -, a distance of about $\frac{1}{2}$ mile.

2. Bomb Pattern: Cannot be ascertained.

(g) Bombing Malfunctions: None.

(2) 95B Squadron: (8210)

(a) AL Capt. Morris N Lt. Fryer
P Capt. Abwender B Lt. Spinnenweber
R/N Lt. Baldie

(b) After the maneuver at the IP, the R/N took over and proceeded to set up course, picking up the target in the scope at 50 miles. The bombardier was clutched in at 11 miles, and subsequent rate checks of 9, 7, and 5 miles were made. Weather conditions throughout the entire run prevented the bombardier from contributing any visual assistance. Bombs were released on a true heading of 086 degrees. C-1 Auto-Pilot was used on the bomb run.

(c) Bombing Altitude: 24900° True, 25500° Indicated

(d) Time of Release: 1603

(e) Method of Release: Salvo

(f) PI Report: 1. The bombs from 95B fell in the Norde Elbe river $2\frac{1}{2}$ miles short of the assigned secondary target. Approximately 1/3 of the bombs fell on the N bank of the river in a park.

2. Bomb Pattern: 2130°L x 1500°W.

(g) Bombing Malfunctions: A/C 7204 had a mission failure and jettisoned 12 x 500 LB GP at 5402-0712.

(3) 95C Squadron: (8548)

(a) P Lt. Thomas B Lt. Hathaway
N Lt. Flygstat R/N Lt. Decherniss

(b) After the maneuver at the IP, which was cut short, the R/N identified the target in the scope at 50 miles and proceeded to kill course. The bombardier was clutched in at 11 miles, and subsequent rate checks of 10, 9, 8, 7, 6, and 5 miles were made. Because

C O N F I D E N T I A L

bombardier was not possible. Bombs were released on a true heading of 099 degrees. C-1 Auto-Pilot was used on the bomb run.

(c) Bombing Altitude: 23900° True, 24500° Indicated

(d) Time of Release: 1605

(e) Method of Release: Salvo

(f) PI Report: 1. The bombs from 95C fell 3 3/4 miles over and left of the assigned secondary target in cleared fields.

2. Bomb Pattern: 1460°L x 2500°W. The pattern indicated late releases and a loose formation on the part of the high element. About 15 stray bombs fell from 20° to 830° beyond the main pattern.

(g) Bombing Malfunctions: None.

c. PFF Narrative:

(1) 13A:

Four PFF A/C were dispatched. 95A deputy set did not function because the altitude potentiometer arm was jammed, which caused excessive delay in the set and no returns were received. This malfunction was evidently caused by extreme turning of the altitude knob by the operator. 95A, B, and C sets operated satisfactorily. H2X technique was employed.

5. Communications: a. VHF: (1) Discipline was very good on channel A because there was only one Group flying. Group leader contacted 3 AD Ground Station and sent progress reports. Weather was received from Kodak scouting force.

(2) Group leader was unable to make contact with the fighter support, but the high Squadron leader had contact as desired.

b. W/T: (1) Both the Division Ground Station and the local HF/DF station had voice interference and unknown keying between 1600 and 1800. Strike and Progress reports were received as required.

(2) 95A	CP 1	CP 2	TGT	CP 3
Flight Plan	1434	1519	1606	1753
ATA	1435	1525	1603	1756
TOD	1441	1527	1609	1800

95A	S B 5	1603
95B	P A 5	1603
95C	S B 5	1605

6. Photography: a. 95 Group installed 2 scope, 5 oblique, and 9 vertical cameras, 0, 5, and 8 of which took pictures: PFF A/C 8782, #2 A/C in 95A: mickey set was out and no pictures were taken. PFF A/C 8210, lead A/C in 95B: the camera magazine malfunctioned. Some negatives were taken, but no prints were made. A/C 8754, lead in 95A: a blown fuse in the A/C prevented the camera's operating.

By Command of Brigadier General HUGLIN:

Ernest A. Kiessling

ERNEST A. KIESSLING,
Lt. Col., Air Corps,
Director of Training & Analysis.

C O N F I D E N T I A L

3TH COMBAT BOMB WING (H)

HAMBURG, GERMANY

20 MARCH 1945

13A GROUP: ATTACKED THE ASSIGNED SECONDARY TARGET BY SQUADRONS USING H2X TECHNIQUE.

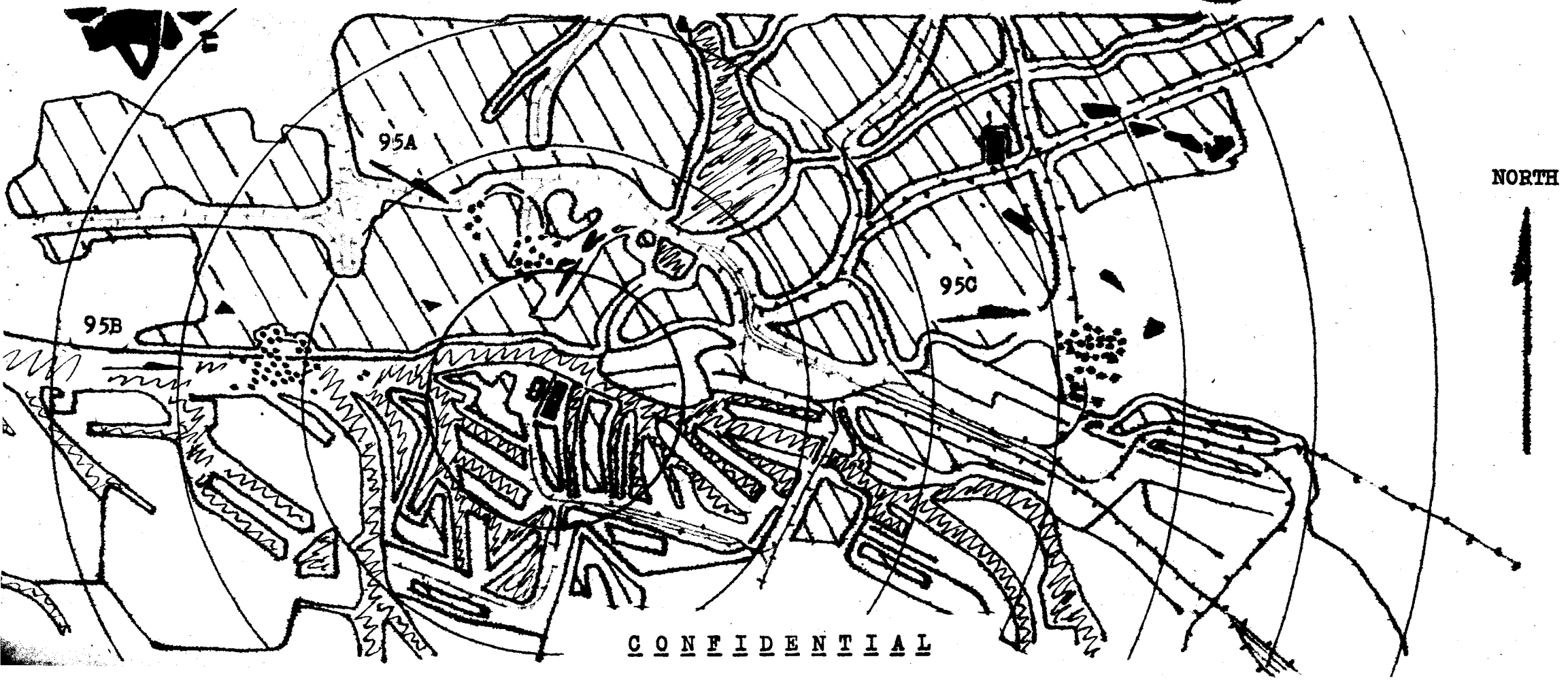
OVERLAY - RAF NIGHT TARGET MAP OF HAMBURG, GERMANY

CIRCLES - 1 MILE RADII

SCALE - 1:63,360

95A - blue dots, 95B - red dots, 95C - purple dots.

Woods & parks.- Lakes & rivers - RR tracks - Built up area -



C O N F I D E N T I A L

**THREE HUNDRED AND THIRTY FIFTH BOMBARDMENT SQUADRON (H)
OFFICE OF THE ENGINEERING OFFICER**

20 March, 1945

SUBJECT: Abortion Report, Aircraft Number 42-107204

TO : Commanding Officer, 95th Bombardment Group (H), APO 559

1. The subject aircraft aborted from the combat mission of March 20, 1945.

2. The pilot reported that he had a drop in manifold pressure and that oil was coming out the breather over the top of the engine. The pilot feathered the engine.

3. Upon examination upon the ground it was found that the engine had failed internally.

**EDWARD J. FLANAGAN
Captain, A. C.
Engineering Officer**

CG, 15TH CBW
CO, 100TH BG
CO, 890TH BG

XXX

95TH BG

XXX

20/3/45 2300 S-2

S-2 OPERATIONAL NARRATIVE, 95TH BOMB GROUP, HAMBURG, GERMANY, 20 MARCH 1945

1. None.
2. A Squadron - Secondary H2X - Hot prints show bombs hitting to left of target.
Good Results.
B Squadron - Secondary H2X - Hot prints show bombs hitting short of target.
Good results.
C Squadron - Secondary H2X - Hot prints show bombs hitting over. Fair results.
4. Flak:
 - A. Damage and Losses:
 - 95A 2A BRL to RP
 - 95B 1AC 8A BRL to RP
 - 95C 5AC 5A BRL to RP Final Report
 - B. Operations:
 1. None
 2. None
 3. None
 - C. Amount, Accuracy, & Type of Fires:
 1. Target - moderate, inaccurate, tracking and barrage - encountered.
 2. Target - moderate, inaccurate, tracking and barrage - encountered.
 3. None.
 4. 5349-1020 - Moderate, inaccurate, tracking - encountered.
 - 5356-0940 - meagre, inaccurate, tracking - encountered
 - 5412-0920 - meagre, inaccurate, barrage - encountered.
 - 5405-0905 - meagre, inaccurate, tracking - encountered.
 5. None
 - D. Phenomena: None.
5. 5-7/10 clouds over target. Downward visibility good.
6. 5354-0843 - 1549 - 20-30 fast boats heading north at Cuxhaven.
5355-0929 - 1557 - 15-20 grey oil storage tanks.
5353-0832 - 1559 - Bremerhaven smoke screen.
5344-0740 - 1620 - 3 very large and 4 small boats at anchor.
5353-0909 - 1635 - Smoke screen.

2-2 Narrative/2

7. Fighter support was superb - so close that enemy aircraft were wary of attacks on this group. There were no departures from briefed route; the mission was flown entirely as briefed.

8. 95A and 95B squadrons sighted 6-10 Me-262s in vicinity of 5400-0920 from 1615 to 1630 hours. 95B sighted 2-4 FW-190s, and 3-6 Me-262s in the same area at the same time.

At 1620 in area of Messerschmidt Bay one Me-262 made an attack from 6 o'clock high and went down and under and in front of lone B-17 ahead of 95A. Two more Me-262s attacked this straggler from 9 o'clock and to 3 o'clock shooting the hell out of him, ducking into clouds after the attack.

One Me-262 made two passes, one from nose and one from tail, at a lone B-17 which was behind and to left of 95C. Two more Me-262s passed below formation from tail to 2 o'clock disappearing in clouds.

One Me-210 or Me-410 passed across 95B from 10 to 4 o'clock, heading 175 degrees, below formation, and went out of sight. Another Me-210 or Me-410 was being chased by P-51s and ducked into clouds.

At 1625 in vicinity of 5358-0940 2 FW-190s approached 95B to 1600 yards in constant trails from 6 o'clock level and then broke away and down toward Hamburg.

Crews reported the 95th formation quite tight today while fighters were about.

~~CONFIDENTIAL~~

23 MAR 1945

SUPPLEMENT TO IMMEDIATE INTERPRETATION REPORT NO. K. 4046

LOCALITY: HAMBURG

1. Blohm u. Voss K.G. Shipyards.
2. Hamburg/Neuhof

PERIOD COVERED: 12 MAR 1945 to 1330 A hours on 22 MAR 45.

ATTACKS:

	<u>Date</u>	<u>S.A.</u>	<u>Reported Weather</u>
U.S. 8th AIR FORCE	20 MAR 45	3417	5/10 - 8/10 Cloud.

PROVISIONAL STATEMENT ON DAMAGE.

This report confirms the damage reported in Immediate Interpretation Report No. K. 4046. Further cover of better quality permits the following additions.

1. Blohm & Voss K.G. Shipyard.

New damage to the Blohm and Voss shipbuilding yard appears to be concentrated in the Northeast section of the already severely damaged plant. The damage is light and from high explosive.

Slightly damaged from the attack is the dry dock. It appears that a crater is located on the track along the edge of the dock on which the cranes run. Severe damage is seen to the office buildings (No 14 on Ill. 3(c)11/11) and an unidentified building in this area is further damaged.

Two bridges connecting the works have been destroyed. A bridge over the Fahr canal has been collapsed. This is probably a foot bridge. Over the Norder Lock a bridge carrying a railway track has also been collapsed.

Reconstructional activity is seen to the Tool Store (21), the Foundry (22) and to two unidentified structures.

2. Hamburg/Neuhof

No fresh damage is seen to this plant of the Rhemania Ossag Mineraloerke A.G.

(Prints 3284,4181-3)

This report is subject to correction and amplification from a more detailed assessment.

PHOTOGRAPHS TAKEN BY: 541 Squadron.

SORTIE: 106G/4992

MEAN TIME AND DATE OF PHOTOGRAPHY: 1330 A hrs. on 22 MAR 1945.

SCALE: 1/9000 F.L. 36"

COVER AND QUALITY: Both targets fully covered on prints of good quality.

LAST REPORT: K4046 (Immed).

COMPARATIVE SORTIE USED: US7/32D.

PRINT DISTRIBUTED: 3283 (to follow when available)

CONFIDENTIAL

A.G.I.U.
EWG/VRS/MF

DISTRIBUTION NO. 24C

333 Copies.

IMMEDIATE INTERPRETATION REPORT NO. K 4165

LOCALITY: HAMBURG

1. DEUTSCHE WERFT A.G. & U-BOAT YARD
2. EUROTANK - OIL REFINERY & STORAGE DEPOTS
3. BLOHM u. VOSS - SHIPYARD

PERIOD COVERED: DEUTSCHE WERFT - 1645 A hrs. on 20 MAR 1945 to 1730 B hrs on 2 APR 1945.

EUROTANK - 19 JUN 1944 to 1730 B hrs. on 2 APR 1945.

BLOHM UND VOSS - 22 MAR 1945 to 1730 A hrs. on 2 APR 1945.

ATTACKS:

	<u>Date</u>	<u>S.A.</u>	<u>Reported Weather</u>
U.S. 8th AIR FORCE			
DEUTSCHE WERFT	30 MAR 45	3490	Clear
EUROTANK	30 MAR 45	3489	6/10 - 8/10 Cloud
BLOHM & VOSS	30 MAR 45	3488	5/10 - 8/10 cloud
RAF BOLBER COMMAND			
BLOHM & VOSS	31 MAR 45	-	8/10 Cloud

PROVISIONAL STATEMENT ON DAMAGE.

1. DEUTSCHE WERFT A.G.

Several items of heavy damage are seen in the target area including four large buildings, a wet gas holder, rail sidings and transshipment facilities. Several small barrack type buildings have been destroyed or damaged in the western part of the area. Details are as follows; the numbers refer to illustration 3(a) 21/8.

- 11. Moulding Loft : 1/2 gutted.
- 12-13 Assembly Shops : 1/3 gutted.
- 22. Assembly shop : Entirely stripped or gutted.
- 24. Assembly shop : West wing partly gutted.
- 26. Heavy Assembly Shop : 5/4 burned out. Extreme crane tracks damaged.
- 27. Timber Store : Numerous craters. Rail sidings cut and stock piles scattered.
- Unidentified large building adjacent on east of (28) : 1/2 destroyed.
- 29. Wet Gas Holder : Destroyed, having probably exploded. Several small buildings in vicinity damaged.

Notes on Damage to Shipping

(From Interpretation Report 7425)

Three pontoon docks, one mother dock and one 740 ton U-Boat sunk in Rusch Basin. One small M/V capsized and one floating dry dock containing a U-Boat damaged in Waltershofer Hafen. Unidentified vessel alongside Blohm and Voss sunk.

2. EUROTANK REFINERY AND ADJACENT STORAGE DEPOTS

Cumulative damage in the oil refinery and the seven oil storage depots bordering Petroleumhafen is heavy. In the period since last reported upon (K 2505, 20 JUN 1944) to 22 MAR 1945, (prior to the latest attack), distillation and processing facilities of Eurotank refinery were wrecked together with three large tanks and several small buildings. In the storage depots, thirty nine tanks were gutted or buckled and a boiler house and two large warehouse type buildings damaged.

As a result of the attack of 30 MAR 1945, further damage is seen, principally in the southern half of the area. This involves nine large crude and fuel oil storage tanks, fifteen small tanks and additional gutting of a large warehouse. The small marshalling yard and rail sidings throughout the area have had numerous track and wagon displacing hits.

NOTES ON ACTIVITY AND EFFECT OF DAMAGE ON PRODUCTION

(Extracted from Report D/1990R)

1. The Refinery is completely inactive.
2. Of the seven oil storage depots, one only (Ollager A.G.) is active. The area's normal storage capacity of over 400,000 tons has been reduced by about 50%.

3. BLOHM & VOSS SHIPYARD

No fresh damage is seen in patches of the southern and western periphery that are cloud free on this cover.

This report is subject to correction and amplification from a more detailed assessment.

SORTIE	PRINTS	TAKEN BY	TIME AND DATE	SCALE
US7GR/39c	4076-80 (Eurotank) 4081-85 (Deutsche Werft)	14 Sq.	1730 B hrs. 2 APR 45	1/8600 (36")
106G/5155	3272-3 (Deutsche Werft) 3265-70 (Eurotank) 3223-4, 3240-41 (Blohm & Voss)	542 Sq.	1630 B hrs. 2 APR 45	1/8600 (36")

COVER AND QUALITY: Eurotank and Deutsche Werft are full and good.
Blohm and Voss covered only on southern and western edge.

LAST REPORT: K 2505 - EUROTANK
K 4046 (Immed) Deutsche Werft.
K 4046 (Sup) Blohm and Voss

COMPARATIVE SORTIE USED: Eurotank - US7/1974
Deutsche Werft - US7/66D
Blohm & Voss - 106G/4992

PRINT DISTRIBUTED: 106G/5155 (3267, 3272) (to follow when available)

HAMBURG ↑
K4165
DIST 916



106 G 5155 2 APR 45 F/36//542.50DN.

221

Hamburg

5-20-75

SECRET

95 "A" LEAD SQ.

*CAMERA AND BOMBSIGHT

		<u>GILLEN</u> 8754 N Z			
	<u>CRYSTAL</u> 8774 A B	<u>BEARD</u> 6801 A A	<u>TESSIER</u> 8782	<u>WOLFOOLE</u> 8828 A J	
<u>MARKEY</u> 8140 A C	<u>ERTEL</u> 8441 A P	<u>TWINING</u> 6946 A F	<u>CRIDLIN</u> 6522 A H	<u>YOUNG</u> 8741 A M	
		<u>DULLE</u> 8331 A G	<u>SHARAR</u> 7257 A L		

95 "B" SQUADRON

		<u>ABWENDER</u> 8210 I J			
	<u>NELSON, R.W.</u> 8676 L V	<u>NELSON, R.A.</u> 8269 I K	<u>RICHARDSON</u> 6902 I G	<u>BRADLEY</u> 9052 I S	
<u>JACKMAN</u> 6475 I L	<u>SUTTON</u> 9037 L T	<u>PRIMER</u> 7783 I R	<u>TURNER</u> 8346 I X	<u>SEABURG</u> 8942 I Y	
	<u>LEGG</u> 7204 I B	<u>CALICURA</u> 6838 I E	<u>CRANFORD</u> 7376 I H		

95 "C" SQUADRON

		<u>THOMAS</u> 8546 L K			
	<u>ROY</u> 8525 N U	<u>RIVET</u> 8776 N B	<u>DESHAZO</u> 8640 N D	<u>KOHLER</u> 9178 N L	
<u>JOHANN</u> 3657 N J	<u>BROWN</u> 8990 N X	<u>SALVO</u> 8617 L Q	<u>JUDY</u> 1867 N O	<u>CUMMINGS</u> 9152 N P	
	<u>GAILBRAITH</u> 2447 L H	<u>LIPPETT</u> 8272 L P	<u>COLEMAN</u> 8106 L E		

R/T COLLECTIVE CALLSIGNS AND FLARE COLORS:
13 A 95TH FIREBALL LEADER --RR FIREBALL BAKER HI --RR FIREBALL BAKER LOW --RR

SHIPS TO MONITOR:	"A" SQ	"B" SQ	"C" SQ
CHANNEL B	CRIDLIN	TURNER	JUDY
CHANNEL C 8TH AF	DULLE	LEGG	LIPPETT
CHANNEL C 66TH WG	ERTEL		
COMMAND #2 (5295)	MARKER	JACKMAN	JOHANN
M/F D/F	MARKER	JACKMAN	GAILBRAITH
CONTROL POINTS	GILLEN		
	TESSIER		
	YOUNG		
STRIKE MESSAGES	GILLEN	ABWENDER	THOMAS
	TESSIER	RICHARDSON	DESHAZO
	YOUNG	SEABURG	CUMMINGS

	<u>LEADERS</u>	<u>"A" SQ</u>	<u>"B" SQ</u>	<u>"C" SQ</u>	<u>EXTRA AIRCRAFT:</u>
READINESS		1105	1055	1115	7154 WING
STATIONS		1205	1155	1215	8317 "
TAXI	1205	1220	1210	1230	9177 "
TAKE OFF	1245	1230	1220	1240	8320 PFF
RENDEZVOUS	1350	1350	1345	1355	
OVER	BASE	Base	Base	Base	
AT	16000	16000	17000	15000	

VHF AUTHENTICATOR: BRANDY
SRD DIVISION RECALL: RADIO CITY MUSIC HALL
13TH COMBAT WING RECALL: SWEETHEART OF SIGMA CHI
INDIVIDUAL ABORTION: SARATOGA SPRINGS
REFERENCE BASE ALTITUDE:
REFERENCE BASE WIND:
COLORS OF THE DAY: 1300-1900: YY O-OBOE V-VICTOR
1900-0100 RY L-LOVE M-MIKE

VHF CALL SIGNS: ..

BOMBERS: VINEGROVE 1-3
FIGHTERS: BALANCE 1-2
GROUND: COLGATE 1

KODAK AUTHENTICATORS:

BAKER	08
CHARLIE	01
WILLIE	79
TOMMY	09
JASON	54
RONALD	21
FREDDIE	76
KARLO	55
GEORGE	40
MICKEY	05

GEOGRAPHICAL REFERENCE POINTS:

M-BRENNEN
O-HAMBURG
N-KIEL
E-MANOVER
Y-HARDY
S-RHEINE

MINIMUM BOMBING ALTITUDE: 23,000 VISUAL
20,000 H2X

me

OK
CAB

SECRET

HEADQUARTERS EIGHTH AIR FORCE
AAF STATION 101
APO 634

.....
* SECRET
* By authority of
* C.G., Eighth Air Force.
* Initials RCG
* Date 20 March 1945
.....

INTOPS SUMMARY NO. 324

PERIOD: 0001 hours 20 March to 2400 hours 20 March 1945

A. STATISTICS

	Total Sorties	Effective Sorties	Tonnage	Claims	E/A	Losses			NYR
						AA	OT	Totals	
Heavy Bomber Atks.	443	410	1175.9	6-3-5A	2	2	0	4	0
Fighter Escort (a)	277	263	0	2-0-5A	0	1	0	1	9
Fighter Sweeps	82	78	0	1-0-2G 2-0-3A 3-0-2G	0	1	0	1	0
Fighter Bombing	0	0	0	0-0-0	0	0	0	0	0
Photo Recon.	35	34	0	0-0-0	0	0	0	0	0
Weather Recon.	39	38	0	0-0-0	0	0	0	0	0
Air/Sea Rescue	14	14	0	0-0-0	0	0	0	0	1
Special Operations	<u>47</u>	<u>45</u>	<u>2.0</u>	<u>0-0-0</u>	<u>0</u>	<u>0</u>	<u>1</u>	<u>1</u>	<u>0</u>
Totals	937	882	1177.9	10-3-13A 5-0-4G	2	4	1	7	10

- (a) Groups based on continent did not operate
- (b) Includes 8-3-12 t/e jet a/c.

B. OPERATIONAL SUMMARY

1. Bomber Attacks

443 a/o (314 B-17s, 129 B-24s) from three Air Divisions sortied in three forces against one oil refinery, one U-Boat yard and port installations in Hamburg area. 410 a/o dropped 1175.9 tons GP on two assigned targets, two assigned secondaries and one T/O. Weather: 5/10-8/10 cloud with high haze and contrails. E/A Opposition: Approximately 30 t/e jets, 2 s/e jets; 7 s/e, 3 t/o, e/a encountered from IP to target by two bomber forces. Claims: 6-3-5 jets air, Losses: 4 a/o (3 B-17s and 1 B-24).

SECRET

S E C R E T

First Force

Four group formation (152 B-17s, 3rd Air Division) sortied against Hamburg/Blohm & Voss U-Boat Yard and Hamburg/Wilhelmsburg Oil Refinery. Hamburg/Wilhelmsburg Oil Refinery not attacked due to weather. 146 a/c dropped 427.7 tons on one primary and one assigned secondary at 1600-1607 hours from 24,000-26,000 feet. Bombing H2X with visual assists. Leaflets dropped on Hamburg. Weather: 5/10-8/10 tops 6-8,000 feet. Flak: moderate to intense, accurate to inaccurate. E/a Opposition: 6-10 t/e jets, 3 Fw 190s, 1 Me 109 engaged in target area. Claims: 1-0-3 jet a/c. Losses: nil. NYR: nil.

Fighter Support: Two groups (79 P-51s) sortied. Up 1410-1414 hours, down 1845-1908 hours. 70 effective sorties. E/a Opposition: 8 to 10 Me 262s, 1 Me 163 encountered in target area but fighters were unable to close. 10 Ar 234s encountered while attacking bombers after IP. Claims: 0-0-2 Ar 234s. Losses: nil. NYR: 7 a/c (6 believed safe on continent).

Details of Bomber attacks as follows:

<u>Assigned Targets</u>	<u>Sorties</u>	<u>Eff. Sorties</u>	<u>Tonnage</u>	<u>Results</u>
Hamburg/Blohm & Voss U-Boat Yard	114	13	39.0	Fair
Hamburg/Wilhelmsburg Oil Refinery	38	Not Attacked		
Hamburg Port area (Sec.)		133	388.7	Fair
Totals	152	146	427.7	

Second Force

Four group formations (162 B-17s, 1st Air Division) sortied against Hamburg/Finkenwarder U-Boat Yards and Hamburg/Neuhof Oil Refinery. Primaries not attacked due to weather. 150 a/c dropped 440.2 tons GP on Hamburg Port area, assigned secondary, and one T/O at 1604-1628 hours from 24,500-27,000 feet. Bombing on H2X. Weather: 5/10-8/10 cloud. Flak: moderate to intense and accurate. Battle Damage: 44 minor, 10 major. E/a Opposition: 15 to 20 Me 262s, 2 Me 163s, 1 Ju 88, 1 Me 109, 2 Fw 190s, 2 Me 210s encountered just after target, e/a very aggressive. Claims: 5-3-2 jets. Losses: 3 B-17s (1 to AA, 2 to e/a). NYR: nil.

Fighter Support: Two groups (75 P-51s) sortied. Up 1418-1427 hours, down 1840-1854 hours. 72 effective sorties. E/a Opposition: 2 Me 262s sighted 10 miles W of Stade. 15 Me 262s encountered while attacking bombers in target area. 1 Me 163 observed in target area. Claims: 0-0-2 Me 262s. Losses: nil. NYR: 2 a/c (believed safe on continent).

Details of Bomber attacks as follows:

<u>Assigned Targets</u>	<u>Sorties</u>	<u>Eff. Sorties</u>	<u>Tonnage</u>	<u>Results</u>
Hamburg/Finkenwarder U-Boat Yards	123	Not Attacked		
Hamburg/Neuhof Oil Refinery	39	Not Attacked		
Hamburg Port area (Sec.)		149	439.7	Unobserved to Fair

- 2 -
S E C R E T

S E C R E T

<u>Other Targets</u>	<u>Sorties</u>	<u>Eff. Sorties</u>	<u>Tonnage</u>	<u>Results</u>
Nordholz A/F	—	<u>1</u>	<u>.5</u>	Unobserved
Totals	162	150	440.2	

Third Force

Twelve squadron formations (129 B-24s, 2nd Air Division) sortied against Heide/Hemmingstadt Oil Refinery. 114 a/c dropped 308 tons GP on primary at 1609-1615 hours from 18,000-24,600 feet. Bombing visual. Leaflets dropped in target area. Weather: 5/10-7/10 alto-stratus with high haze and contrails. Flak: nil at target; intense and accurate at Heligoland. Battle Damage: 9 minor. E/a Opposition: nil. Claims: nil. Losses: 1 B-24 to AA. NYR: nil.

Fighter Support: Two groups (75 P-51s) sortied. Up 1433-1445 hours, down 1915-1930 hours. 75 effective sorties. E/a Opposition: 50 s/e e/a observed NE of Dummer Lake. 3 s/e e/a encountered W of Dummer Lake. Groups strafed Lech A/D. Claims: 2-0-1 s/e air, 1-0-2 ground. Losses: 1 a/c to AA. NYR: nil.

Details of Bomber attacks as follows:

<u>Assigned Target</u>	<u>Sorties</u>	<u>Eff. Sorties</u>	<u>Tonnage</u>	<u>Results</u>
Heide/Hemmingstadt Oil Refinery	129	114	308.0	Very Good

2. Fighter Escort

Six groups (229 P-51s) sortied in support of three bomber forces. Up 1410-1445 hours, down 1840-1930 hours. 217 effective sorties. E/a Opposition: Approximately 35 t/c jet a/c were encountered making repeated attacks on bomber forces in Hamburg area. 1 Me 163 observed at low altitude over Hamburg. 2 Me 262s sighted 10 miles W of Stade. 50 s/e e/a seen NE of Dummer Lake. 1 Me 109, 2 Fw 190s engaged W of Dummer Lake. Two groups strafed A/F in Dummer Lake area. Claims: 2-0-5 (includes 0-0-4 t/c jets) air, 1-0-2 ground. Losses: 1 a/c (to AA). NYR: 9 a/c (8 believed safe on continent)

One group (48 P-51s) sortied in support of Royal Air Force Bombers. Up 1518 hours, down 1936 hours. 46 effective sorties. E/a Opposition: nil. Claims: nil. Losses: nil. NYR: nil.

3. Fighter Sweeps

Two groups (82 P-51s) sortied. Up 1405-1419 hours, down 1845-1915 hours. 78 effective sorties. Groups swept Bremen, Hannover, Blankenburg area; Kiel, Flensburg areas. E/a Opposition: 30 Me 262s engaged near Hamburg while attacking bombers, 1 Me 262 attacked vicinity of Hitzacken. 9 jet a/c (believed Me 262s) observed vicinity Stendal. Claims: 2-0-3 Me 262s air, 3-0-2 ground. Losses: 1 a/c (to AA). NYR: nil.

4. Fighter Bombing:

Nil.

5. Photo Reconnaissance

35 a/c sortied as follows:

13 a/c (11 F-5s, 2 Spitfires) for D/A photos and mapping in Central and Western Germany. 3 a/c failed to obtain photos due to interceptions.
17 P-51s as escort for photographic mission, escort uneventful.
5 B-17s on H2X photo mission. 4 sorties.

No losses.

6. Weather Reconnaissance

39 a/c sortied as follows:

3 B-17s on routine reconnaissance to positions over the Atlantic and return,
2 B-17s completed flights to Azores.
5 Mosquitoes special reconnaissance over Germany.
29 a/c (27 P-51s, 2 B-17s) as scouts for bomber forces. 28 sorties.

No losses.

7. Air/Sea Rescue

14 a/c (12 P-47s, 2 PBVs) on routine search and patrol. No losses. NYR:
1 PBV.

8. Special Operations

47 a/c sortied as follows:

10 B-24s on ECM, jamming between 1255-1500 hours.
12 B-24s on leaflet mission over Holland and Germany, night 19/20. 11 sorties.
8 P-51s as radio relays.
1 B-17 dropped 2 tons on Oberursel at 1650 hours from 25,000 feet.
15 a/c (6 B-17s, 9 Mosquitoes) dropped Chaff. 14 sorties. 1 a/c lost.
1 Mosquito on special operation.

Losses: 1 Mosquito

C. INTELLIGENCE

1. Enemy Air Opposition

Weather over NW Germany was 6/10 cumulus cloud, haze 3,000 feet, tops 7-8,000 feet and 8/10 haze and cirrus cloud at 20-21,000 feet with good visibility. Jet a/c again made the most of this type of weather, skilfully using haze and cloud cover and making aggressive and persistent attacks on the bombers in the Hamburg area. Attacks took place from 1600-1630 from the I.P. through the First and Second Force target area until the R.P. by an estimated 30 Me 262s and 10 Ar 234s. Jet tactics appeared to have varied, some ignored the fighters and concentrated entirely on getting through to the bombers while others attempted to draw off the fighters with one small formation so that a second formation could attack the P-51s from the rear. The use of Ar 234s for interception of heavies is a new departure on the part of the G.A.F., this being the first time they have been used for this purpose. These e/a were flying with 7 a/c at 27,000 feet and a further 3 a/c as top cover at 29,000 feet, in P-51 formation. Attacks, however, were made singly. In spite of the aggressiveness and persistence of both Me 262s and Ar 234s only 2 bombers were lost while the bombers claim 6-3-5 and the fighter who chased e/a over a wide area destroyed 2 and damaged 7.

No attacks were made on the Third Force but one fighter group after breaking escort with this force sighted and engaged 2 Fw 190s and 1 Me 109 at 1745 W of Dummer Lake at 12,000 feet destroying 2 and damaging the other. After setting course for home the same group sighted a further 50 plus s/e e/a NE of Dummer Lake but fuel shortage prevented them from attacking.

One fighter group sweeping ahead of the bombers sighted 10 probably Me 262 at 20,000 feet on a northwesterly course in the Stendal area at 1600 but were too far away to attack. It is possible that these e/a were making their way to the Hamburg area to reinforce the jets already engaged. The other sweeping force engaged 2 Me 262s without claim 20 miles south of Kiel at 12,000 feet at 1600 and then joined the fight over Hamburg - 1 P-51 pilot chasing a jet from Hitzacker to Schwerin where it crashed from 4,000 feet at 1620.

2. Flak

Heligoland - intense, accurate.

Hamburg - moderate to intense, inaccurate to accurate.

Norderny - meager, inaccurate.

Zwolle - heavy, moderate, inaccurate.

3. Observations

Shipping observed around mouth of the Elbe River.

25 e/a seen on Bernburg A/F. Believed to be Me-109s. Many flak positions observed on west side of field, others on north and south sides.

P-51sB or C with old type canopy, silver with red star like US marking and no other marking joined formation at Elbe estuary at 23,000 ft, flew 75 to 100 yards out from flight. When turned into he disappeared into haze and was lost.

S E C R E T

Smoke screen in operation along the Elbe Estuary, ineffective. 2 four engine and 4-6 s/e a/c observed on Vechta A/F (s/e may be dummies).

4. Damage to Enemy Installations

Heide/Hemmingstadt Oil Refinery - Very Good

Many hits on power station, main distilling unit, storage shed, dump filling plant, tank farm and extraction plant,

Hamburg/Blohm & Voss U-Boat Yards and Port Area- Fair

One squadron dropped visually blanketing north half of yard. One of the two bursts were noted on the office buildings and at least three on the dry dock at north east corner, in addition to the area noted as blanketed. Another squadron's bombs can be partly seen on the southeast corner of this target area extending SW across the harbor and on to the dock area joining to the south. Three of the patterns were noted along the eastern and western edges of the main dock area, these were mostly in the river. Two patterns are on the city proper north of the river, four on the outskirts of the city to the east and south and other in open country two miles SW of target.

Hamburg Dock Area-Unobserved to Fair

Cloud of 5/10-10/10 density and ground haze throughout the entire target area. Approximately 100 GP bombs in and adjacent to mineral oil and asphalt works 3 miles S of the center of the city. At least 2 explosions occurred in target area, several fires started, haze prevented individual pin-pointing of strikes. 100 GP bombs in and adjacent to Reisherstieghofen 2 $\frac{1}{2}$ miles S of the center of city warehouse area, and direct hits could be seen on warehouse and storage facilities. Through break in cloud scattered GP bombs could be seen in residential area immediately adjacent to eastern edge of the Auszen-Alster Lake near center of town. One partial concentration could be seen in open area immediately adjacent to N and W edge of Ebano Asphalt, one bomb in target area damage slight.

S E C R E T

5. Ground Activity

- 21st Army Group - Nothing to report.
- 12th Army Group - In the Remagen bridgehead, resistance on the eastern side of the pocket is lessening. Advances have been made in the northern and southern sectors. U.S. Infantry now hold the west bank of the Rhine River between Coblenz and Bingen. Armored spearheads now at M-2446, 2738, 1722 and 0708, and have cut the Kaiserslautern-Homburg road. Other armor is in the vicinity of Naunkirchen.
- 6th Army Group - In the Saar area, U.S. troops continue to advance into the Siegfried line. To the east, French Infantry and armor is in the vicinity of Weissenbourg.
- Miscellaneous - German attitude towards foreigners (document captured by 83 U.S. Infantry Division)

"Neuss, 9 June 1944

SUBJECT - Granting of German Citizenship to eligible Foreigners.

TO - All Offices for National Welfare.

The O in C of the SS, in his capacity as Reich Commissar for the perpetuation of the German race, has directed that certain elements of foreign nations be settled within the boundaries of the old Reich for the purpose of finding a new home. In this connection, it must be remembered that many Poles, for example, have had German ancestors. The healthy, clean and decent impression that some of these families make definitely sets them apart from the great mass of the Polish race. It shows that the German blood which flows in their veins has not yet completely been contaminated. It therefore becomes our duty to regain these lost sheep for the German nation, by resettling them in the boundaries of the Reich, and after a period of probation, granting them German citizenship.

Signed....(illegible)
Part leader of the NSDAP
Neuss-Grevenbroich. "

-7-

S E C R E T

S E C R E T

6. G.A.F. Activity over England

Flying Bombs - From 0001 hours to 2400 hours 20 March

Launched Landfall Gr. London Destroyed

3 1 0 0

About 10 e/a on intruder activity were plotted from 2030 to 2230 hours. Operating in Lincolnshire and East Anglia. Preliminary reports show damage to AAF installations. 1 Ju-88 destroyed.

D. OPERATIONS OF OTHER AIR FORCES

1. Tactical Air Forces

	<u>Sorties</u>	<u>Claims</u>	<u>Losses</u>
Ninth Air Force	2229	1-0-0A	7
First U.S. T.A.F.	1167	50-0-129G 0-0-0	9
Second T.A.F.	939	0-0-0	4
R.A.F. Fighter Command	<u>378</u>	<u>0-0-0</u>	<u>1</u>
Totals	4713	1-0-0A 50-0-129G	21

Ninth Air Force

Night 19/20

Sorties : 33 a/c defensive and intruder patrol.

E/A Claims and Losses: nil.

Day 20

Sorties : 1794 Fighters & Fighter Bombers
402 Medium Bombers
2196

S E C R E T

Missions : 9th Bomb Division: 402 sorties. Attacked M/Ys, ammunition filling plant in western Germany. E/A Claims: nil. Losses: nil.

9th T.A.C.: 649 sorties. Air support to ground forces, armed reconnaissance, east of Rhine, escort to medium bombers. E/A Claims: nil. Losses: 3 a/c.

19th T.A.C.: 637 sorties. Armed reconnaissance east of Rhine, rail interdiction, attacked rail and road traffic. Supported ground forces. E/A Claims: 1-0-0 air, 0-0-17 ground. Losses: 4 a/c

29th T.A.C.: 508 sorties. Armed recon. Dortmund-Hamm area. Dive bombing and strafing A/Fs in western Germany. Airfield cover. E/A Claims: 50-9-112 ground. Losses: nil.

Misc. Ground Claims (Ninth Air Force)

	Destroyed	Damaged
M/T	745	531
Locos	75	31
RR Cars	772	686
Hangars	13	16

Second T.A.F.

Night 19/20

Sorties : 64 Armed Reconnaissance
35 Interception Patrol
14 Reconnaissance
113 a/c

Missions : Fighter sweeps in Hildersheim, Fulda, Stendau, Osnabruck areas.

Claims : nil

Losses : 1 a/c

Day 20

Sorties : 70 Medium Bombers
42 Light Bombers
86 Armed Reconnaissance
157 Prearranged support
369 Escort to fighter sweeps
102 Reconnaissance
826 a/c

Missions: Bombed Bucholt Railroad center, Dorsten M/Y, swept Burgsteinfurt, Dummer Lake areas. Attacked Germany Army Headquarters, rail interdiction.

Claims : Nil

Losses : 3 a/c

Misc. Ground Claims:	Destroyed	Damaged
M/T	10	35
Barges	2	12
Tugs	2	1
RR Cars	4	15
Horse Drawn Vehicles	0	5

R.A.F. Fighter Command

Night 19/20

Sorties : 4 Flying bomb interception patrol.

Claims & Losses; nil.

Day 20

Sorties ; 177 Offensive Patrols
162 Escort to Bomber Command
14 Escort to Coastal Command
17 Flying Bomb Patrol
4 Reconnaissance
374 a/c

Mission: Rail interdiction. Attacked rocket sites in Hague area.
Armed reconnaissance in Aalborg (Denmark) area.

Claims : nil

Losses : 1 a/c

First U.S. T.A.F.

Night - 19/20

Sorties : 15 a/c on Intruder Patrol.

Claims : Nil.

Losses : 1 a/c to AA.

SECRET

Day - 20

Sorties : 1032 Fighters and Fighter-Bombers
120 Bombers
1152 a/c

Missions : 42nd Bomb Wing: 120 sorties. Attacked 3 road and rail blocks in tactical area. Claims: nil. Losses: 2 a/c.

12th T.A.C.: 655 sorties. Fighter bombing, fighter sweeps, air cooperation to 7th U.S. Army. Escort to medium bombers. Leaflets. E/a Claims: nil. Losses: 5 a/c.

1st French T.A.C.: 340 sorties. Fighter sweeps, dive-bombing mission. Armed reconnaissance in 1st French Army area. E/a claims: nil. Losses: 2 a/c.

Western French Air Force: 37 sorties. Armed reconnaissance. Claims: nil. Losses: nil.

Claims : Nil.

Losses : 9 a/c.

Ground Claims:

	<u>Destroyed</u>	<u>Damaged</u>
M/T	1036	969
RR Cars	120	184
Locos	17	28
Barges	1	10
Horse Drawn Vehicles	10	0

SECRET

2. Fifteenth Air Force

19 March

442 B-24s, 149 P-51s sortied.
433 B-24s escorted by 144 P-51s dropped 969 tons on Muhlendorf M/Y, 5 tons on Plottling M/Y, 58 tons on Garching M/Y, 20 tons on Altmarkt M/Y, 4.5 tons on Klagenfurt M/Y. Losses: nil.

242 B-17s, 159 B-24s and 101 P-38s sortied.
238 B-17s, 155 B-24s escorted by 94 P-38s dropped 872 tons on Alndshut M/Y, 19 tons on Passau M/Y, 10 tons on Saint Vert M/Y. Losses: 1 B-24. Claims: 3-0-0 ground.

54 P-51s sortied.
52 P-51s strafed rail lines in Linz-Slazburg-Muhlendorf-Regensburg-Inglostadt area. Claims: 1-0-0 air. Losses: 3 P-51s.

38 P-38s sortied.
30 P-38s dropped 29.5 tons on Varazdin M/Y and strafed rail lines in Varazdin, Pragersko-Zagreb areas. Losses: 3 P-38s.

Bombers

Sorties: 842 a/c (242 B-17s, 601 B-24s)
Eff. Sorties: 826 (238 B-17s, 588 B-24s)
Tonnage: 1957.5
Losses: 1 B-24

Fighters

Sorties: 342 a/c (139 P-38s, 203 P-51s)
Eff. Sorties: 320
Tonnage: 29.5
Claims: 1-0-0 air, 3-0-0 ground
Losses: 6 P-51s

20 March

113 B-24s and 54 P-51s sortied.

110 B-24s escorted by 53 P-51s dropped 205 tons on Wels Main M/Y.

Losses: nil.

82 B-17s and 49 P-38s sortied.

79 B-17s escorted by 42 P-38s dropped 172 tons on Korneuburg Oil Refinery,

38 tons on Amstetten M/Y. Losses: 1 B-17.

79 B-17s sortied.

68 B-17s dropped 84 tons on Amstetten M/Y, 30 tons on Weiner Neustadt M/Y,

23 tons on Saint Polten M/Y, 6 tons on Klagenfurt M/Y, 12 tons on 5 T/Os. Losses: nil.

84 B-17s and 28 P-38s sortied.

78 B-17s escorted by 26 P-38s dropped 100 tons on Kagran Oil Refinery,

102 tons on Amstetten M/Y, 3 tons on a T/O. Losses: 3 B-17s.

316 B-24s and 83 P-38s sortied.

290 B-24s escorted by 77 P-38s dropped 18 tons on Saint Valentine Tank

Works, 530 tons on Amstetten M/Y, 47 tons on Saint Polten M/Y, 11.5 tons on 3 T/Os. Losses: nil.

164 B-24s and 149 P-51s sortied.

158 B-24s escorted by 131 P-51s dropped 364 tons on Wels M/Y, 5 tons on

2 T/Os. Claims: 2-1-0 air. Losses: 1 P-51.

Bombers

Sorties : 838 a/c (593 B-24s, 245 B-17s)

Eff. Sorties: 783 a/c (558 B-24s, 225 B-17s)

Tonnage : 1750.5

Claims : 0-0-0

Losses : 4 B-17s

Fighters

Sorties : 363 a/c (203 P-51s, 160 P-38s)

Eff. Sorties: 329 a/c (184 P-51s, 145 P-38s)

Claims : 2-1-0

Losses : 1 P-51

3. R.A.F. Bomber Command

Day		Losses
99 Lancasters	Hamm M/Y	0
125 Halifaxes		0
16 Lancasters		0
12 Mosquitoes	Recklinghausen M/Y	0
14 Lancasters	Mienburg RR Bridge	0
<u>3 Mosquitoes</u>	Weather Reconnaissance	<u>0</u>
269		0
 Night		
156 Lancasters		
1 Mosquito	Heide/Hemmingstadt Oil Refinery	
224 Lancasters		
11 Mosquitoes	Bohlon Syn. Oil	
12 Lancasters	Halle	
27 Mosquitoes	Bremen	
38 Mosquitoes	Berlin	
16 Mosquitoes	Kassel	
9 Lancasters	Mine laying	
57 Mosquitoes		
20 Halifaxes		
10 B-17s		
9 B-24s	Bomber Support	
2 Halifaxes		
4 Mosquitoes	Signal Investigation Patrol	
21 Halifaxes		
<u>48 Lancasters</u>	Diversiory Sweeps	
665 a/c		Losses for night operation unavailable.

NOTE: The foregoing is based on preliminary reports and is not to be used for record purposes.

CHARLES Y. BANFILL
Brigadier General, U.S.A.
Director of Intelligence