

HEADQUARTERS
NINETY FIFTH BOMBARDMENT GROUP (H)
Office of the Operations Officer

AP0 559.
13 August 1944.

SUBJECT: Report of Operations Officer, Frantic mission of 7 August 1944.

TO : Commanding Officer, 95th Bomb Group (H), APO 559.

1. GENERAL NARRATIVE: The 13 A combat wing, composed of the 95 A, 95 B and 95 C groups, flying as lead, high and low groups respectively, took off at 0740 - 0805 hours. By 0915 the groups had assembled over the base at 7,000'. Since the three 95th groups flew the entire mission together they will be treated as one unit in this narrative;

At 0915 the 13 A wing left the base on course for Mirgorod where the 13 B wing was to join the formation. The 13 B wing requested a twenty minute delay in leaving their base, so the 13 A wing did two 360° turns and left Mirgorod on course at 0952.

The climb to bombing altitude was started at 1000 and bombing altitude was reached at the battle line at 1252. The briefed course was followed on the route out and at the I.P. the groups peeled off as planned. Bombs were away at 1321.

The return route was flown as planned, the let down being started upon crossing the battle line. The base was reached at 1730 and the landing was made at 1740 - 1800.

2. AIRCRAFT NOT ATTACKING: Thirty aircraft, including 1 PFF, left the base in the formation shown in the attached diagrams "1A", "2A" and "3A". A/C # 1992 left the formation before reaching enemy territory and is not credited with a sortie. The remaining twenty-nine A/C bombed the primary and are credited with sorties. The formation over the target is shown in attached diagrams "1B", "2B" and "3B".

3. LOST AIRCRAFT: None.

JAMES A. HEARN,
Capt., Air Corps,
Asst. Opn. Officer.

SECRET

HEADQUARTERS 13TH BOMBARDMENT GROUP
APO 559

STATISTICAL CONTROL REPORT OF AIRCRAFT NOT ATTACKING

13TH COMBAT BOMBARDMENT WING

DATE RENDERED ~~25 August 1944~~

PART I - TABULAR SUMMARY:

DATE OF MISSION ~~7 August 1944~~

STRATEGICAL MISSION

| COMBAT GROUP | SCHEDULED | AIRBORNE | AIRBORNE LESS RETURNING SPARES | ATTACKING | NOT ATTACKING | SORTIES |
|--------------|-----------|----------|--------------------------------|-----------|---------------|---------|
| A | 11 | 11 | 11 | 10 | 1 | 10 |
| B | 8 | 8 | 8 | 8 | 0 | 8 |
| C | 10 | 10 | 10 | 10 | 0 | 10 |

PART II - REASONS WHY AIRCRAFT DID NOT ATTACK OR FAILED TO TAKE OFF:

Combat Gp A.C.S.N. Category Reason for Failure & Corrective Action Sortie (Yes-No)

"A" 42-5192 "3" Broken oil line. No

JAMES A. HEARN
Capt., Air Corps,
Actg. Operations Officer.

SECRET

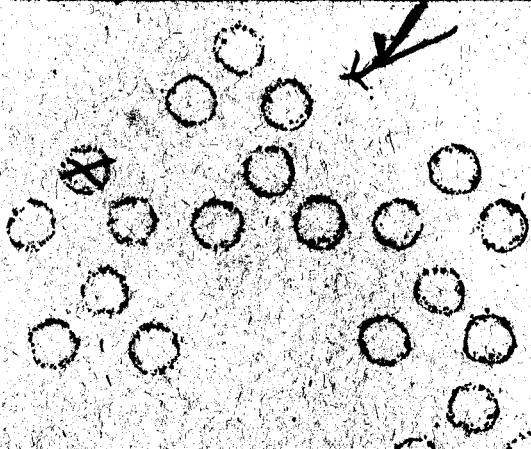
GROUP 95C SQN W/Low A/C 066 DATE AUG 7 '44

WHERE ATTACK TOOK PLACE 20 mi W. of WRAA, Polaris HEIGHT 19500' TIME 1347

SIDEW

| | |
|--------------|---------------|
| Our Heading | <u>45</u> |
| Type of E/A | <u>FW190</u> |
| Clock Pos. | <u>2</u> |
| Attack Level | <u>12600'</u> |

MARK A/C ATTACKED AND CLOCK POSITION



DO NOT
WRITE IN
THIS SPACE

COMPLETE STORY OF THE ATTACK. E/A CAME IN AT 210' HIGH, TURNING TOWARD HIS RIGHT
U/T BEGAN FIRING AT 800 YDS, FALL OFF AT 400 YDS
ON RT. W. + SLID UNDER FORMATION;
E/A WAS BURNING + SMOKING AROUND BOWLING CANOPY CAME OFF + PILOT BAILED OUT DIRECTLY UNDER THIS SHIP. DIT BEGAN FIRING AT 400 YDS. HIT FIRED 600 ROUNDS; B/T FIRED 250 ROUNDS; B FIRED 75 ROUNDS. WAS PSI ALSO AT 2 O'CLOCK BEYOND E/A, BUT DID NOT FIRE ON E/A. (APPEAR TO)
 TISHA.

Gunner responsible for E/A damage: U/T WETHERELL Position U/T
 Other gun positions firing on the same E/A: B + B/T
 Other A/C firing at the same time at the same E/A: A/C Nos. _____
 If E/A was shot down or damaged: Corroborated by:

| | | | | |
|--------------------------|---------|------------|-----------------|------------|
| <u>S/S MARTIN, F.A.</u> | A/C No. | <u>066</u> | Position in A/C | <u>T/C</u> |
| <u>S/S HUBBARD, D.G.</u> | " " | <u>066</u> | " " | <u>DIT</u> |
| | " " | | " " | |

Comments of interrogator:
CLAIM - E/A DESTROYED.
Approved -

Interrogator M. D. W... Time 1520
AUG 17 '44

NINETY FIFTH BOMBARDMENT GROUP (H)
Office of the Operations Officer

GROUP FORMATION FORM

DATE _____

LEAD

HAGENBAUGH
24 55

COL MOLLER
CAPT BOZARTH

ICW

KINNEY
19 99

DAY
72 15

RHW

GRIFFIN
26 78

MCCILLEY
70 47

ROMANCHEK Russian Nav.
29 51

PRICE
15 89

LAYL
18 76

POWELL
19 92

COTNER
19 89

PIPKIN
24 27

Abort

BRIEFING _____
READINESS _____
STATIONS _____
TAXI _____
TAKE-OFF _____
RENDEZVOUS _____

EXTRA SHIPS

334 7204 - LEAD
335 2560
336 _____
412 _____

NINETY FIFTH BOMBARDMENT GROUP (H)
Office of the Operations Officer

GROUP FORMATION FORM

DATE _____ 44

LEAD

SHERWOOD MAJ LINDLEY

75 | 99

WALKER

24 | 50

BRODERSON

19 | 39

HIGH

LOW

FIESS

14 | 10

ELLSWORTH

78 | 44

GILBERT

73 | 83

DECKARD

73 | 34

OLNEY

71 | 94

BRAUND

78 | 58

HANSON

18 | 67

BRIEFING _____
READINESS _____
STATIONS _____
TAXI _____
TAKE-OFF _____
RENDEZVOUS _____

EXTRA SHIPS

334 _____
335 _____
336 _____
412 _____

NINETY FIFTH BOMBARDMENT GROUP (H)
Office of the Operations Officer

GROUP FORMATION FORM

DATE _____ 44

LEAD

BACHUZENSKI LATHAM
60 | 85

AUSTIN PSOTA
14 | 62 78 | 82

HIGH

LOW

GIELEN
20 | 66

FLETCHER
72 | 57

DANCISIN
77 | 97

SALVIA
72 | 32

LASH
16 | 75

SQUIRES
18 | 87

METZINGER
78 | 98

BRIEFING _____
READINESS _____
STATIONS _____
TAXI _____
TAKE-OFF _____
RENDEZVOUS _____

EXTRA SHIPS

334 _____
335 _____
336 _____
412 _____

HEADQUARTERS EIGHTH AIR FORCE
 AAF STATION 101
 APO 634

(190)
 TRZEBINIA *Wm*

INTOPS SUMMARY NO. 99

PERIOD: 0001 hours 7 August 1944 to 2400 hours 7 August 1944.

A. STATISTICS

| | <u>Missions</u> | <u>Disp.</u> | <u>Sorties</u> | <u>Atkg.</u> | <u>Tonnage</u> | <u>Claims</u> | <u>E/A</u> | <u>AA</u> | <u>N/E</u> | <u>OT</u> | <u>Totals</u> |
|--------------------|-----------------|--------------|----------------|--------------|----------------|------------------|------------|-----------|------------|-----------|---------------|
| Heavy Bomber Atks. | 28 | 902 + | 879 | 483 | 1337.5 | 0-0-0 | 0 | 1 | 1 | 1 | 3 |
| Fighter Escort | 10 | 471 | 437 | 0 | 0 | 1-0-3A 0-0-1G | 0 | 0 | 0 | 0 | 0 |
| Fighter Sweeps | 0 | 0 | 0 | 0 | 0 | 0-0-0 | 0 | 0 | 0 | 0 | 0 |
| Fighter Bombing | 8 | 279 | 271 | 171 | 52.5 | 4-0-1G | 0 | 0 | 0 | 5 | 5 |
| Photo Recon. | 38 | 38 | 38 | 0 | 0 | 0-0-0 | 0 | 0 | 0 | 0 | 0 |
| Weather Recon. | 21 | 21 | 21 | 0 | 0 | 0-0-0 | 0 | 0 | 0 | 0 | 0 |
| Air/Sea Rescue | 25 | 25 | 25 | 0 | 0 | 0-0-0 | 0 | 0 | 0 | 0 | 0 |
| Special Operations | <u>65</u> | <u>65</u> | <u>65</u> | <u>0</u> | <u>0</u> | <u>0-0-0</u> | <u>0</u> | <u>0</u> | <u>0</u> | <u>0</u> | <u>0</u> |
| Totals | 195 | 1801 | 1736 | 654 | 1390.0 | 1-0-3A 4-0-2G | 0 | 1 | 1 | 6 | 8 |

+ 12 spares - 7 used.

B. OPERATIONAL SUMMARY

1. Bomber Attacks

29 combat wings (518 B-17s, 384 B-24s - 902 a/c) dispatched to attack oil dumps and bridges over wide area in France. Support by 10 fighter groups. 28 assigned targets. 483 a/c dropped 1337.5 tons G.P., visually, on 14 primaries and other targets. E/a opposition: nil. Claims: nil. Losses: 3 a/c (2 B-24s, 1 B-17).

First Force: 3 combat wings (112 B-17s) dispatched to attack oil dumps in the Bordeaux area. 105 a/c dropped 261.8 tons G. P. on both assigned targets at 1345-1434 hours from 14,000-23,000 feet. Weather: CAVU with slight ground haze. Flak: nil at target, meager and accurate at Lisieux. Battle damage: 19 minor, 7 major. E/a opposition: nil. Claims: nil. Losses: 1 B-17 to unknown causes.

Fighter Support: 3 groups (139 P-51s) dispatched. Sorties 123. Up 1025 - 1041 hours, down 1601 - 1738 hours. 2 t/e e/a observed in vicinity of +Orleans, lost in haze. 25 plus Me-109s and FW-190s on deck circling Chartres A/F were attacked. 2 groups strafed Chartres A/F and rail and motor traffic north of Bordeaux. Claims: 1-0-3 air, 0-0-1 ground. Losses: Nil.

S E C R E T

Details of bomber attacks follow:

| <u>Assigned Targets</u> | <u>Dispatched</u> | <u>Attacked</u> | <u>Tons</u> | <u>Results</u> |
|-------------------------|-------------------|-----------------|--------------|----------------|
| St. Loubes (oil dump) | 38 | 34 | 84.3 | Good |
| Montbartier (oil dump) | <u>74</u> | <u>71</u> | <u>177.5</u> | Fair |
| Totals | 112 | 105 | 261.8 | |

Second Force: 7 combat wings (224 B-17s) dispatched to attack one bridge east of Paris and 6 oil dumps - 3 in the Paris area and 3 southeast of Paris. 218 a/c dropped 570.6 tons G.P. on 6 of the 7 assigned primaries and 5 other targets at 1244 - 1319 hours from 14,000 - 26,000 feet. Weather: 2/10 - 8/10 in the Paris area, 2/10 - 3/10 south of Paris. Flak: Intense, accurate in Paris area; meager, accurate south of Paris. Battle Damage: 53 minor, 27 major. E/a opposition: Nil. Claims: Nil. Losses: Nil.

Fighter Support: 2 groups (97 P-51s) dispatched. Sorties 96. Up 1020 - 1040 hours, down 1445 - 1522 hours. No e/a opposition. Uneventful escort. Claims: Nil. Losses: Nil.

Details of bomber attacks follow:

| <u>Assigned Targets</u> | <u>Dispatched</u> | <u>Attacked</u> | <u>Tons</u> | <u>Results</u> |
|-------------------------------|-------------------|-----------------|--------------|----------------|
| Dugny (oil dump) | 37 | 24 | 72.0 | Unobserved |
| Paris-Genevilliers (oil dump) | 38 | 0 | not attacked | |
| Paris-St. Ouen (oil dump) | 37 | 12 | 22.8 | Poor |
| Bourron Mariotte (oil dump) | 23 | 23 | 56.6 | Poor - Fair. |
| Sens (oil dump) | 26 | 26 | 64.0 | Fair |
| St. Florentin (oil dump) | 25 | 25 | 62.2 | Fair |
| Nanteuil Bridge | 38 | 36 | 106.5 | Fair |

Other Targets

| | | | | |
|------------------|-----|-----------|-------------|------------|
| Maintenon Bridge | | 23 | 65.7 | Unobserved |
| Houdon M/Y | | 14 | 22.8 | Unobserved |
| Rouglaf | | 1 | 2.7 | Unobserved |
| Chartres A/F | | 23 | 62.3 | Fair |
| Chateaudun A/F | | <u>11</u> | <u>33.0</u> | Fair |
| Totals | 224 | 218 | 570.6 | |

Third Force: 5 combat wings (182 B-17s) dispatched to attack 4 bridges and one oil dump NE of Paris. Assigned targets not bombed due to 9/10 - 10/10 cloud over target area. 1 a/c dropped 3 tons G.P. on T/O at 1118 hours from 22,000 feet. Flak: Nil at target, meager inaccurate at Lille. Battle Damage: 32 minor, 3 major. E/a opposition: Nil. Claims: Nil. Losses: Nil.

Fighter Support: 2 groups (48 P-38s, 52 P-51s - 100 a/c) dispatched. Sorties 90. Up 0841 - 0914 hours, down 1300 - 1351 hours. No e/a opposition. One group strafed rail transportation from Vitry-le-Francois to Fontenai-Tresigny. Claims: Nil. Losses: Nil.

S E C R E T

S E C R E T

Details of bomber attacks follow:

| <u>Assigned Targets</u> | <u>Dispatched</u> | <u>Attacked</u> | <u>Tons</u> | <u>Results</u> |
|-------------------------|-------------------|-----------------|-------------|----------------|
| Fismes Bridge | 39 | Not attacked | | |
| Anizy Le Chateau Bridge | 39 | Not attacked | | |
| Compiègne (oil dump) | 26 | Not attacked | | |
| Jussy Bridge | 39 | Not attacked | | |
| Beautor Bridge | 39 | Not attacked | | |
| <u>Other Targets</u> | | | | |
| Montdidier A/F | — | <u>1</u> | <u>3.0</u> | Unobserved |
| Totals | 182 | 1 | 3.0 | |

Fourth Force: 2 combat wings (51 B-24s) dispatched to attack two oil dumps NE of Paris. Assigned targets not bombed due to 8/10 to 10/10 cloud in target area. 27 a/c dropped 68 tons G.P. on other targets at 1027 - 1104 hours from 10,000 - 19,000 feet. Flak: Moderate, inaccurate en route. Battle Damage: 17 minor, 2 major, E/a opposition: Nil. Claims: Nil. Losses: 1 B-24 to AA.

Fighter Support: 1 group (35 P-47s) dispatched. Sorties 34. Up 0910 hours, down 1226 hours. No e/a opposition. Uneventful escort. Claims: Nil. Losses: Nil.

Details of bomber attacks follow:

| <u>Assigned Targets</u> | <u>Dispatched</u> | <u>Attacked</u> | <u>Tons</u> | <u>Results</u> |
|-------------------------|-------------------|-----------------|-------------|----------------|
| Remilly (oil dump) | 26 | Not attacked | | |
| Givet (oil dump) | 25 | Not attacked | | |
| <u>Other Targets</u> | | | | |
| Serause (town) | | 9 | 22.5 | Poor |
| Andenne Bridge | | 10 | 24.9 | Good |
| U/I T/Os | — | <u>8</u> | <u>20.6</u> | Unobserved |
| Totals | 51 | 27 | 68.0 | |

Fifth Force: 12 combat wings (333 B-24s) dispatched to attack 3 bridges and 9 oil dumps north of Paris. 132 a/c dropped 434.1 tons G.P. on 6 assigned primaries and 2 other targets, 1144 - 1308 hours from 11,000 - 23,000 feet. Remainder of targets not attacked due to cloud cover in target area. Flak: Meager, inaccurate en route. Battle Damage: 43 minor, 2 major. E/a opposition: Nil. Claims: Nil. Losses: 1 B-24 crash-landed in U.K.

Fighter Support: 2 groups (100 P-51s) dispatched. 94 sorties. Up 1014 - 1102, down 1405 - 1455 hours. No e/a opposition. Claims: Nil. Losses: Nil.

S E C R E T

Details of bomber attacks follow:

| <u>Assigned Targets</u> | <u>Dispatched</u> | <u>Attacked</u> | <u>Tons</u> | <u>Results</u> |
|---------------------------------|-------------------|-----------------|-------------|----------------|
| Saleux (oil dump) | 24 | 24 | 75.5 | Very Good |
| Reques-sur-Course (oil dump) | 24 | 23 | 69.0 | Good |
| Aire-sur-la-Lys (oil dump) | 24 | Not attacked | | |
| Bois-de-la-Houssiere (oil dump) | 26 | Not attacked | | |
| Brussels/Vilvorde (oil dump) | 48 | Not attacked | | |
| Wendelgem (oil dump) | 24 | Not attacked | | |
| Langerbrugge (oil dump) | 20 | 9 | 25.3 | Good |
| Rieme/Ertveld (oil dump) | 24 | 11 | 26.0 | Good |
| Ostend (oil dump) | 12 | Not attacked | | |
| Peronne Bridge | 33 | Not attacked | | |
| Doullens Bridge | 38 | 37 | 147.5 | Very Good |
| Frevent Bridge | 36 | 15 | 60.0 | Good |

Other Targets

| | | | | |
|-------------------------------|-----|-----|-------|------------|
| Factory 12 mi. N of Wendelgem | | 12 | 28.8 | Good |
| U/I T/O | | 1 | 2.0 | Unobserved |
| Totals | 333 | 132 | 434.1 | |

2. Fighter Escort

10 groups (35 P-47s, 48 P-38s, 388 P-51s - 471 a/c) dispatched to escort bombers attacking tactical targets in France. 437 sorties. Up 0841 - 1102 hours, down 1226 - 1738 hours. Combat with 25 plus Me-109s and FW-190s over Chartres A/F. 3 groups strafed motor and rail traffic north of Bordeaux and from Vitry-le-Francois to Fontenay-Tresigny. Claims: 1-0-3 air, 0-0-1 ground. Losses: Nil.

In addition to e/a destroyed on the ground, strafing claims include:

Destroyed

6 locos
5 trucks
1 high tension tower

Damaged

5 locos
182 goods wagons
2 trucks
5 flak towers
32 RR cars
2 factories
3 barges
1 high tension tower
1 automobile

3. Fighter Sweeps

Nil.

4. Fighter Bombing

8 groups (194 P-47s, 85 P-51s - 279 a/c) dispatched to bomb and strafe M/Ys and rail transportation facilities in area north and east of Paris. Sorties 271. Up 1021 - 1839 hours, down 1403 - 2156 hours. No e/a opposition. 171 a/c dropped 44.8 tons G.P. and 7.7 tons I.B. on 8 M/Ys, 1 A/F and numerous other ground targets. Claims: 4-0-1 ground. Losses: 5 a/c (3 P-47s, 2 P-51s) to unknown causes.

Additional claims from strafing and bombing:

Destroyed

28 locos
135 RR cars
7 trucks
1 scout car
2 autos
55 military vehicles

Damaged

94 locos
201 RR cars
1 gas storage tank
12 trucks
51 oil cars
12 autos
3 flak cars
1 bus
51 military vehicles
22 goods wagons
2 water towers
1 transformer station
2 roundhouses

5. Photo Reconnaissance

38 a/c (32 F-5s and 6 Spitfires) dispatched. All completed missions. 30 a/c mapped Paris area. 8 a/c on D/A to Berlin, Hamburg, Amiens area and south and north of the Paris area. All a/c returned safely.

6. Weather Reconnaissance

21 a/c dispatched. 2 B-17s on routine weather reconnaissance. 10 P-51s and 2 Mosquitoes as scouts for bomber forces. 7 a/c as special weather scouts. All a/c completed missions and returned safely.

7. Air/Sea Rescue

25 a/c (11 P-51s, 14 P-47s) dispatched on Air/Sea Rescue operations. 14 P-47s completed routine spotter work and reported no ditching incidents. 11 P-51s dispatched to escort Warwick of 16 Group (RAF) on a search of the Borkum-Heligoland area. All a/c returned safely.

8. Special Operations

7 B-17s were dispatched on two separate operations to drop leaflets on 23 targets in France. All a/c returned safely.

36 a/c on special operations. All a/c returned safely.

17 a/c (13 P-47s and 4 B-17s) were dispatched on special operations. 2 B-17s returned early. All a/c returned safely.

5 a/c (1 B-17 and 4 P-51s) dispatched as airborne radio relay. All a/c returned safely.

C. INTELLIGENCE

1. Enemy Air Opposition

Heavy bombers ranging over a wide area in France were unopposed by the G.A.F. Supporting fighters reported only one encounter. A P-51 group escorting first force B-17s observed 25 plus Me-109s and FW-190s on deck circling Chartres A/F. E/a were engaged at 1400 hours with claims of 1-0-3 for no losses.

2 s/e jet a/c were sighted 10 miles north of Amiens at 25,000 feet, 1230 hours, but were not engaged.

2. High

| | |
|-----------|--------------------|
| Paris | Intense, accurate |
| Lille | Meager, inaccurate |
| Chartres | Meager, accurate |
| Lisieux | Meager, accurate |
| Reims | Moderate, accurate |
| Amiens | Meager, inaccurate |
| Abbeville | Meager, inaccurate |
| Combray | Meager, inaccurate |
| Liege | Meager, inaccurate |

3. Observations

4. Damage to Enemy Installations

Assigned Targets

St. Loube (oil dump) - Good Results.

Three concentrations G.P. bombs, burst in and adjacent to target area. Direct hits on: 2 medium-sized rectangular buildings in western section of target area, 4 small buildings in the northern section, 4 small buildings in the southern section, at least 6 oil storage tanks. Explosions among oil storage tanks seen in northern portion of target area.

Montbartier (oil dump) - Fair Results.

Six concentrations of G.P. bombs in target area. Very little visible damage seen to underground fuel tanks with exception of what appears to be 2 explosions in the western portion of the target area.

Nanteuil Bridge - Fair Results

Three concentrations of G.P. bombs in and adjacent to target area. One direct hit to the western approach of the bridge and three direct hits along the eastern embankment.

Sens (oil dump) - Fair Results

One concentration G.P. bombs in target area. Two storage tanks received direct hits. Dock area immediately north of depot received at least 6 hits. In addition, a large factory-type building, north of the dock area, received hits and is damaged at the south end. A second concentration south of target area in vicinity of Sens RR Bridge. At least 4 hits can be seen on rail lines on eastern terminus of bridge.

St. Florentin (oil dump) - Fair Results

Two concentrations of G.P. bombs in and adjacent to target area. 2 oil storage tanks in northern portion of target area, a direct hit each, 6 hits on rail lines south of target area. Direct hit on one small building at southwest corner of the depot.

Bourron Marlotte (oil dump) - Poor to Fair Results.

One concentration of G.P. bombs in and north of target area. Four sections of oil tank cars were parked on the siding at time of attack. Direct hits on at least 3 cars with fires resulting. Second concentration fell into woods and residential area, 700 yards north of target area.

Paris St. Ouen (oil dump) - Poor Results.

Bombs seen falling toward the Paris St. Ouen Fuel Depot, 4 miles north northwest of center of Paris. Heavy cloud and intense cloud haze prevents the pin-pointing of any strikes.

Saleur (oil dump) - Very Good Results

Concentration of hits in target area. North and south part of target hit.

Doullens Bridge - Very Good Results

Radius of 500 ft. concentration of hits on target area.

Langerbrugge (oil dump) - Good Results

Concentration of bursts from center of target to 750 ft. south.

Rieme/Ertveld (oil dump) - Good Results

Concentration of bursts from center of target to 1500 ft. south.

Frevent Bridge - Good Results

Pattern 3,000 ft. west of target. Hits on M/Y, possible hits on factory, and built-up area.

Reques sur Course (oil dump) - Good Results.

Pattern extending from 300 ft - 1500 ft radius.

Other Targets

Ardenne Bridge, Belgium - Good Results

10 a/c bombed road bridge with 1000 G.P. bombs. Pattern is loose. At least 2 bursts seen at the north end of the temporary bridge. Balance of the pattern fell into built-up area of the town that lies north of the bridge.

Chateaudun A/F - Fair Results

One concentration of G.P. bombs in administration office and barracks area. This area damaged seriously by previous attacks. Extreme northwest highway received two near-misses. No a/c on field at time of attack.

Chartres A/F - Fair Results

Two concentrations of G.P. bombs in vicinity of northern hangar area. At least 8 hits on line between Chartres and Bails. Second concentration although partially obscured by smoke can be seen near the northern hangar area with at least 5 hits on the perimeter tracks at this point.

Factory, North of Wendelgem, T/O - Good Results.

Hits on factory building.

NOTE: The foregoing is based on preliminary reports and is not to be used for record purposes.